

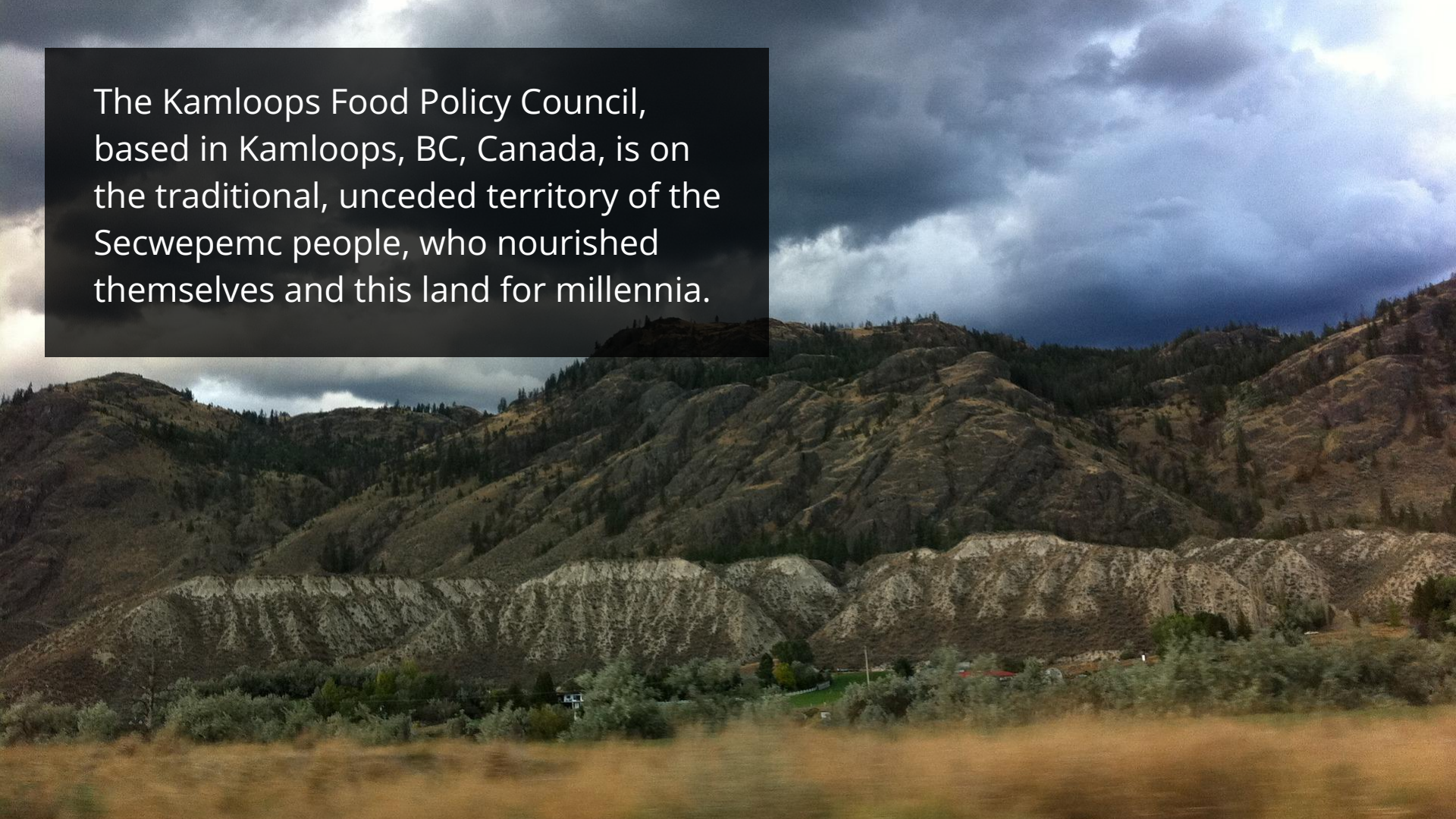


Food and the City

Food is a Lever for Transformative Change



The Kamloops Food Policy Council, based in Kamloops, BC, Canada, is on the traditional, unceded territory of the Secwepemc people, who nourished themselves and this land for millennia.





SUSTAINABLE DEVELOPMENT & AFFORDABLE HOUSING

Food and the City Series - Krista Macaulay





FOOD & DEVELOPMENT

How can we have a food system that is regenerative, sovereign, and just without development policies that protect, preserve, and uplift agricultural lands and practices?



MANAGING GROWTH AND SUSTAINABILITY

How can we grow in a way that supports a strong local food system and meets the varied needs of our community?

Growth is not always an urban net positive. it costs \$465 per capita each year, *over and above taxes and other fees*, to pay for new subdivisions

Growth for the sake of growth can mean the loss of valuable ALR land.





SPRAWL IS NOT THE ANSWER TO AFFORDABILITY

When we encourage people to move further and further out to find housing they can afford, they are offsetting that cost with other expenses.

Let's look at transportation: **Gas prices rose 33% in 2021 and new vehicles more than 7%.**



SPRAWL IS NOT THE ANSWER TO AFFORDABILITY

**But no growth is undoubtedly an
urban net negative.**

WHERE DO WE GROW FROM HERE?

Does new suburban development meet the needs of our community?

Can we instead use new development to create a more equitable and accessible Kamloops?



HOW CAN WE MEET THE NEEDS OF ALL?

- **Welcoming more voices in development processes to help ensure more deeply inclusive representation in our development processes**
 - Public Forums
 - YIMBY Campaign
 - Seeking out voices of renters, young adults who can't afford to move out of parents' homes, single parent families, etc.



HOW CAN WE MEET THE NEEDS OF ALL?

- **Flexible development guidelines, regulations and zoning:**
 - Bold changes to our municipal regulations can support, encourage, and foster infill development and increased density in our core neighbourhoods



HOW CAN WE MEET THE NEEDS OF ALL?

- **Incentivizing good development:**
 - Calling for the City of Kamloops to actively support creative and innovative models for increasing our supply of affordable housing through housing co-ops and/or partnerships with local non-profit and for-profit developers.



HOW CAN WE MEET THE NEEDS OF ALL?

- **Protecting our urban wildland interface and agricultural lands:**
 - Development on wildland interface must meet higher standards to account for the true cost of the loss of ecosystem services and increased climate change risk (i.e., Fires in Juniper)



HOW CAN WE MEET THE NEEDS OF ALL?

- **Development accountability and transparency:**
 - When development is considered in locations that contribute to urban sprawl, we are calling for greater accountability and transparency about the full scope of impacts to our city by this kind of development
 - Setting development fees that cover short/long-term costs of new developments





Sprawl does not have to be inevitable and it's not the only solution. We all have a role to play in making our community vibrant, inclusive and affordable.

Ameera Shivji



PUBLIC SPACES & THE COMMONS

Food and the City Series - Lindsay Harris





ARE YOU FEELING THE PINCH?

The cost of food
climbed **9.1%**
from July of 2021



COST OF LIVING IS RISING

- Food prices
- Gas and transportation
- Housing affordability
- Recreation
- Education
- Health and personal care costs



IMAGINE YOUR HOUSEHOLD BUDGET IF YOU COULD...

- Access free, convenient, reliable public transit
- Access free, reliable wifi services
- Harvest fresh, healthy food in public parks
- Visit welcoming parks, plazas, free music and cultural events
- Use walking, hiking and biking trails, public pools and splash pads, and accessible playgrounds

THE COMMONS

“ the public facilities, green spaces, and services that are available to everyone in our community free of barriers or costs.



WHY INVEST IN THE COMMONS?

Kamloops is already spending money on common resources.

We can repurpose this investment and save money in the long run.



WHY INVEST IN THE COMMONS?

Investments in public amenities and quality of life improvements are the most effective way to grow healthy local economies.



WHY INVEST IN THE COMMONS?

Families are more likely to spend money at local businesses and circulate dollars in the local economy





Public spaces flatten the divides we put up between ourselves. They belong to us all, and they call each of us to a higher common responsibility to make our city a great, vibrant, and accepting place to be.





SOLUTIONS: BUTLER URBAN FARM

No one who shows up looking for free produce is turned away empty-handed.

SOLUTIONS: THE STIR PARKLET



A community gathering space to bring people together around food

KFPC POLICY RECOMMENDATIONS

- Invest in public transit by eliminating fares and increasing the coverage and frequency of service.
- Provide reliable public wifi in more public spaces



KFPC POLICY RECOMMENDATIONS

- Create more public spaces
- Invest in free, no barrier public events



KFPC POLICY RECOMMENDATIONS

- Increase the availability of food commons in the community



“

**You can't steal it
because it's already
yours**

~Butler Urban Farm





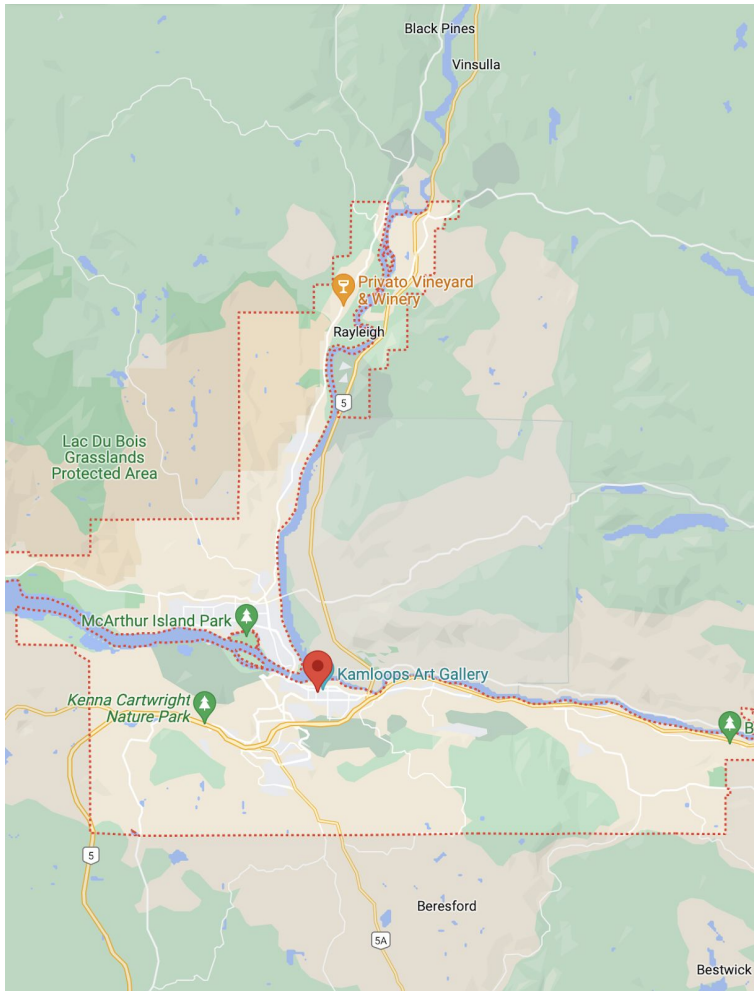
PLANNING FOR PEOPLE, NOT CARS

Food and the City Series - Leif Douglass



CURRENT CONTEXT

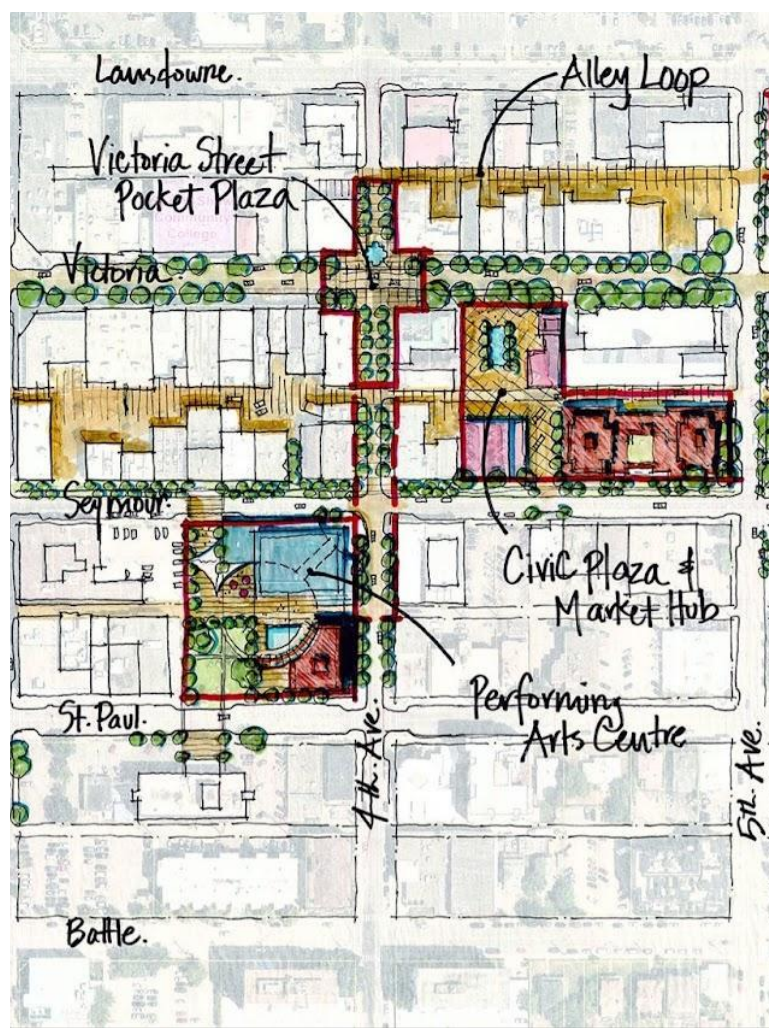
- Kamloops is a vehicle focused city
- Significant urban sprawl



WHY TRY TO CHANGE TRANSPORTATION?

- Cars have lots of great transportation advantages
- But what about all of the hidden costs of planning our cities around cars?



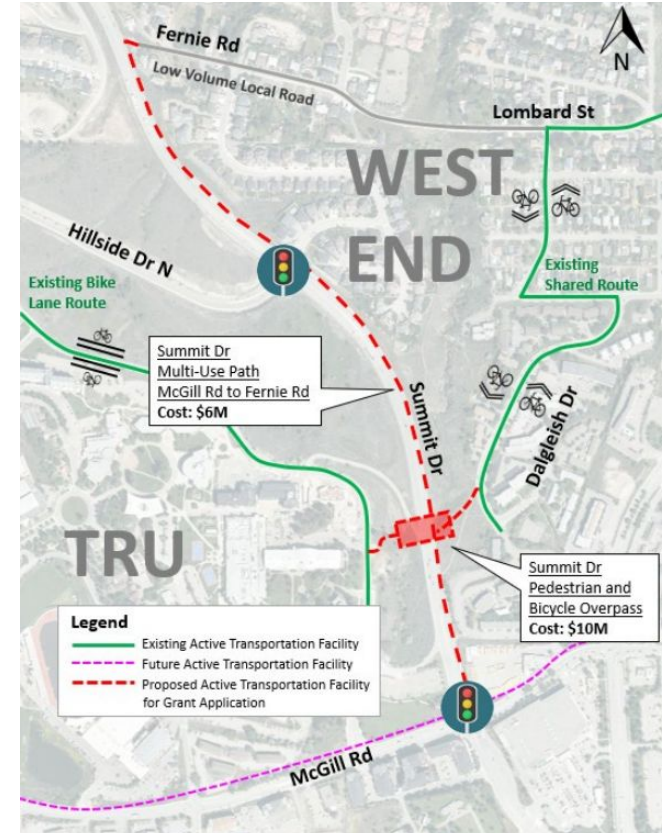


SWITCHING GEARS

- Active Transportation
- Transit
- Multi-Modal Transportation
- Development Guidelines
- From Theory to Practice

ACTIVE TRANSPORTATION

- Medium-Long Term
 - Connect underserved areas of the city
 - Differentiate 'Streets' from 'Roads'



ACTIVE TRANSPORTATION

- More immediate
 - Help address bike theft
 - Investigate e-bike or e-scooter shares
 - Promote active transportation culture



TRANSIT FOR ALL

- Focus on rapid, core routes
- Invest in infrastructure
- Make it free!
- Improve tracking
- Animate bus exchanges





MULTI-MODAL TRANSPORTATION

- Reduce barriers to seamless use of different transportation modes

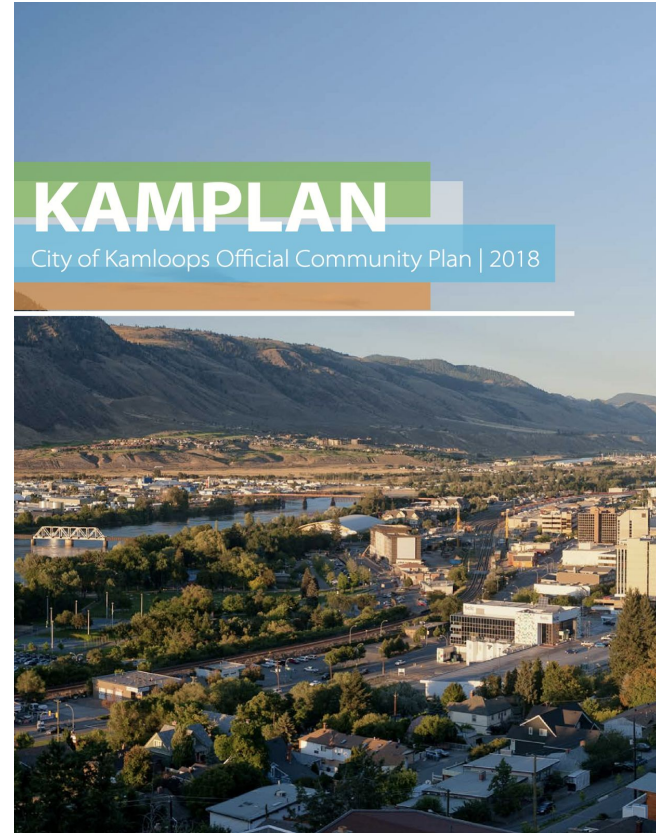


DEVELOPMENT GUIDELINES

- Simplify densification
- Eliminate parking minimums
- Other opportunities

THEORY TO PRACTICE

- Need for far greater integration between planning documents and implementation





HEALTHY ECOSYSTEMS AND PESTICIDE USE

Food and the City Series - Krista Macaulay





PESTICIDES

encouraging an investment in the

ECOLOGICAL
VALUE



of
our land

ARE PESTICIDES
ENCOURAGING AN
INVESTMENT IN
THE ECOLOGICAL
VALUE OF OUR
LAND?



PESTICIDES AND PESTICIDE USE EFFECTS



Pesticides, also known as pest control products, are used to control the activities of pests and minimize their effects.

Pesticides can have a range of negative impacts on our health, environment and well-being.



PESTICIDE USE EFFECTS



- Short-term adverse health effects
- Chronic adverse effects
- Certain groups of individuals are more vulnerable to pesticide impacts.



GLYPHOSATE

2,4-D



GLYPHOSATE & 2,4-D IN KAMLOOPS

According to the City of Kamloops Integrated Pest Management (IPM), the City only uses chemical pesticides as a **last resort** and only after following all of the IPM steps.

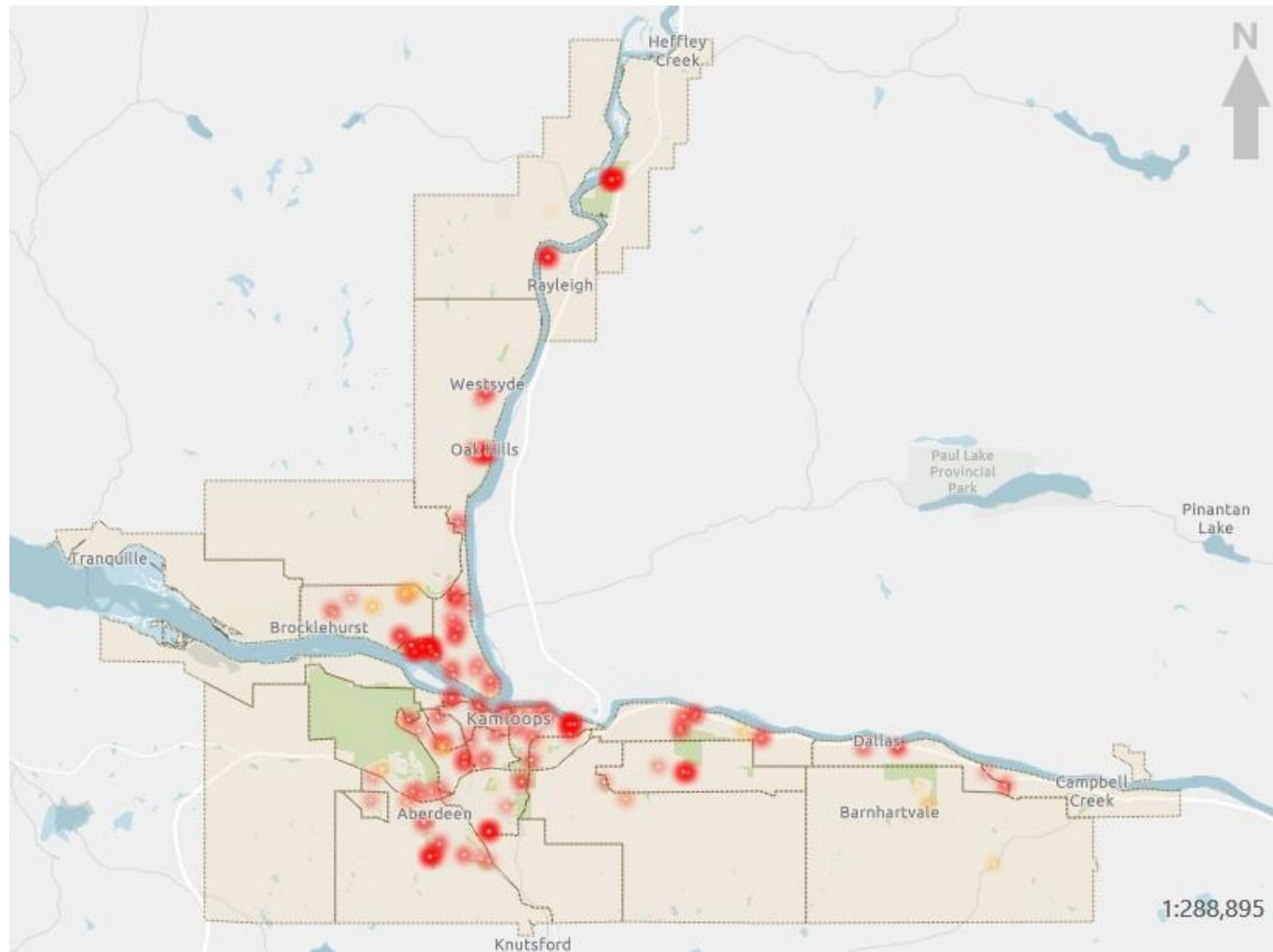


GLYPHOSATE & 2,4-D IN KAMLOOPS

According to the City of Kamloops Integrated Pest Management (IPM), the City only uses chemical pesticides as a **last resort** and only after following all of the IPM steps.

The use of Glyphosate and 2,4-D is widespread throughout Kamloops.



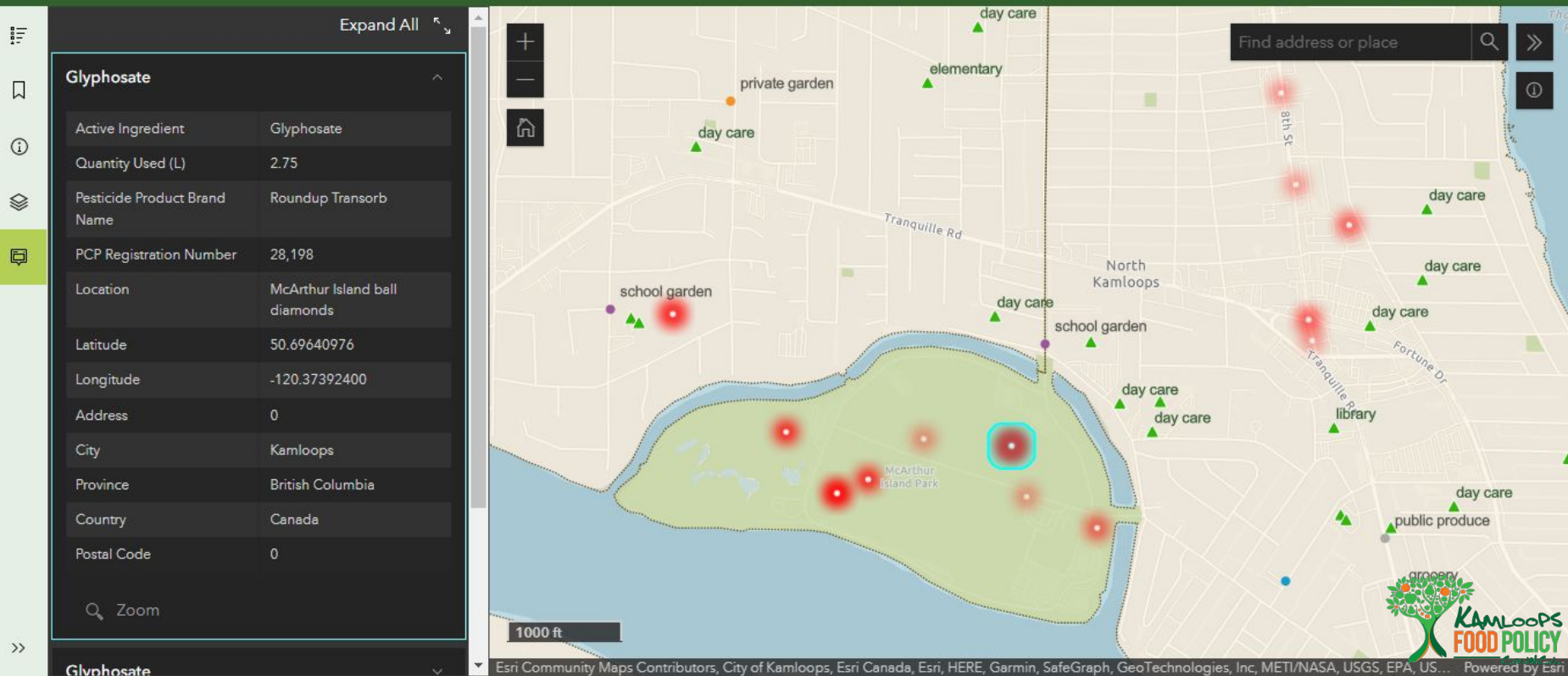


Pesticide Use on Public Lands in Kamloops in 2021

This interactive map displays the frequency and approximate location of Glyphosate and 2,4-D use in 2021 within the city of Kamloops boundary.

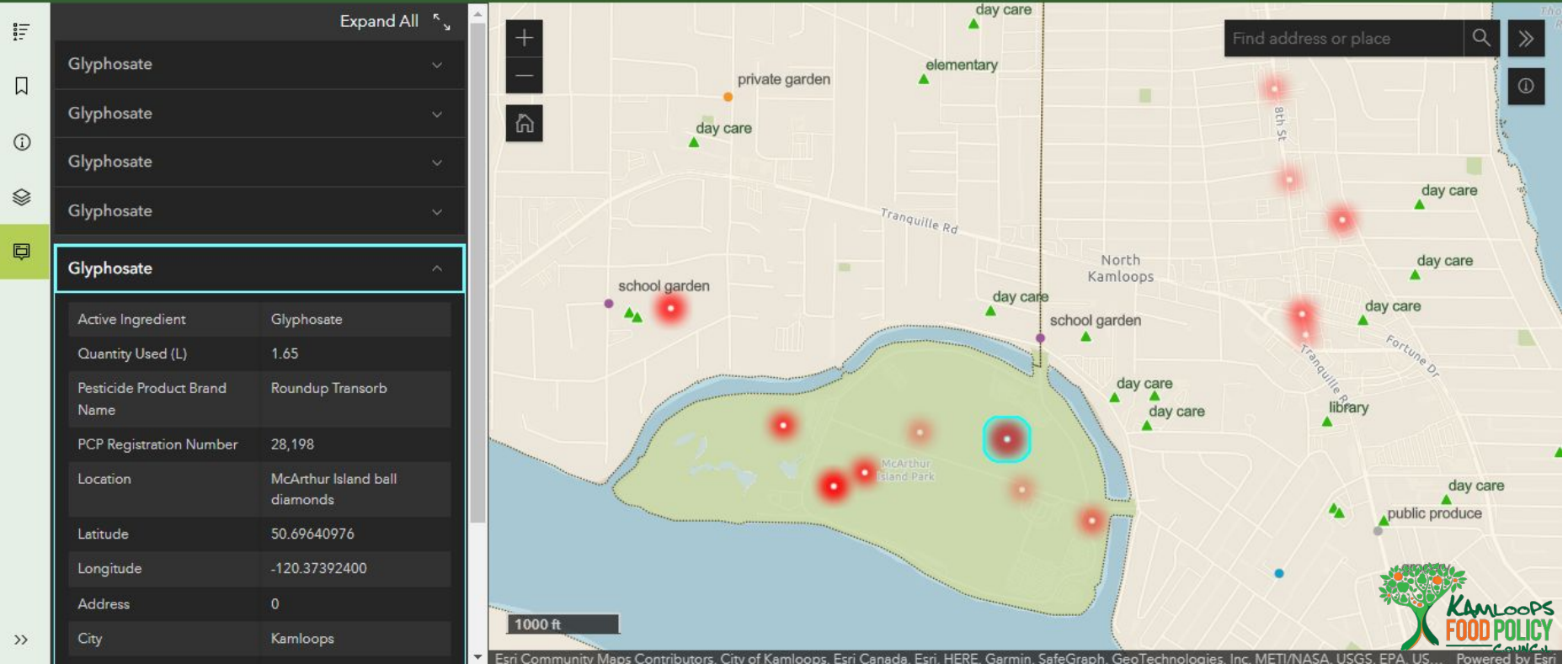
HOT SPOTS

Pesticide Use on Public Lands in Kamloops in 2021



HOT SPOTS

Pesticide Use on Public Lands in Kamloops in 2021



KFPC POLICY RECOMMENDATIONS

- Incorporate alternative methods to control invasive species:
 - **Behavioural:** Better watering, planting clover instead of grass, mulching, soil fertility & drainage improvement
 - **Mechanical:** Weed-whipping, mowing, steam, digging, hand-pulling, hoeing, tilling
 - **Biological:** Knapweed root and flower weevils, beneficial micro-organisms, grazing
 - **Non-toxic chemicals:** Acetic acid, citric acid, herbicidal essential oil, herbicidal soap, iron chelate, corn gluten meal

KFPC POLICY RECOMMENDATIONS

- Engage citizens in the development of an Integrated Pest Management Plan



KFPC POLICY RECOMMENDATIONS

- Transition more city land to higher ecological values and healthier ecosystems:
 - Adopt more edible landscaping
 - Replace current landscaping strategies with native plant bioswales
 - Transition to a Natural Asset Management approach across all public work operations in Kamloops



KFPC POLICY RECOMMENDATIONS

- Implement a complete ban on the use of Glyphosate and 2,4-D on all city lands, including spot applications.





COMMUNITY SAFETY

Food and the City Series - Lindsay Harris





**COMUNITY
SAFETY**

WHAT IS SAFETY?

“Community safety engages personal security, personal development, and community development at the individual and community level.”



WHAT IS SAFETY?

“Safety is ‘freedom from fear... and freedom from want’ for all community members. ” (UNDP)



**COMUNITY
SAFETY**

WHO IS EXPERIENCING FEAR AND WANT?

People who are:

- BIPOC;
- experiencing mental health issues or substance use disorders;
- in abusive situations;
- street entrenched; and
- food insecure

WHAT CONDITIONS CREATE LACK OF SAFETY IN KAMLOOPS?

Food Insecurity

Housing Crisis

Lack of Accessible Health Care

Lack of Mental Health Supports

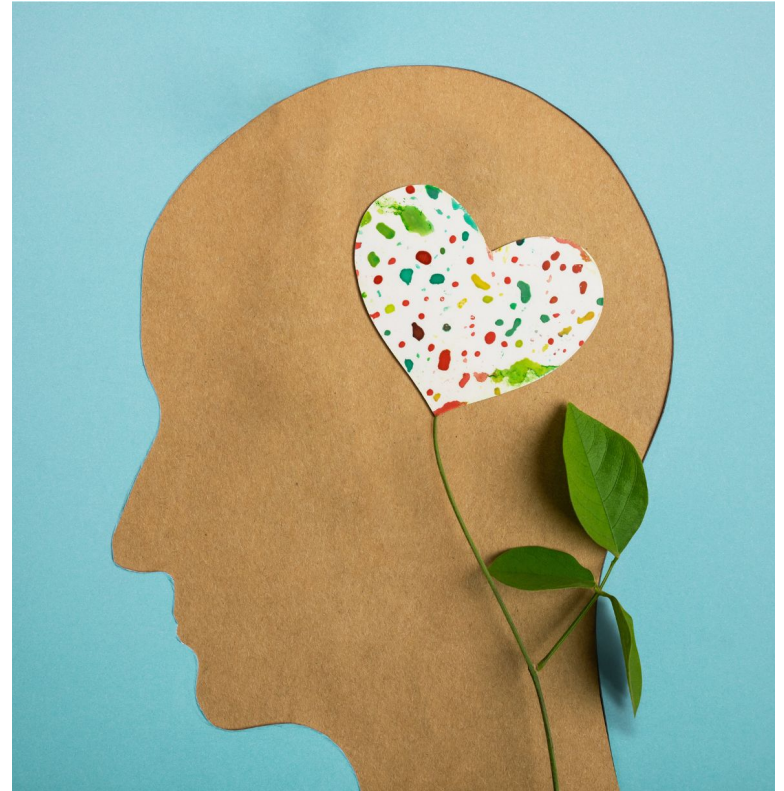
Stigma and Shame



MENTAL HEALTH CRISIS

Current funding structures and administration services place police as the main contact for many mental health crises

Lack of funding and trained professionals preventing expansion of effective programs like Car 40 and the Street Team



STIGMA AND SHAME

Citizens ignoring, or going out of their way to harass, marginalized groups, and people in mental health or domestic violence crisis

Care providers like psychological clinicians, doctors, and support workers, holding biases against their clients; blaming them for their situation



ALTERNATIVES TO POLICING



Our default solution to increasing community safety is more policing

Policing doesn't address the root causes of a lack of safety

YOUTH ACTIVISTS SHARE ALTERNATIVES



“ I think many people are quick to imagine punishment as the only possible response to violence. I wish people would ask why violence happens and center their response on **transforming the conditions that lead to violence.**

~Destine Phillips, the REAL Youth Initiative



YOUTH ACTIVISTS SHARE ALTERNATIVES



“

Many people think it is perfectly justified to respond to violence with ruthless punishment. They think it is a form of justice and an effective deterrent. I wish people recognized that **harming people in the name of justice is not only morally inconsistent — it's also ineffective.**

Punitive systems only create more cycles of trauma and violence. If we really want our communities to heal, we will need to choose restoration over revenge.

~Briana Payton, Chicago Community Bond Fund



KFPC POLICY RECOMMENDATIONS

- Collaborative development of a comprehensive community safety strategy
- Safety audits in different community environments



KFPC POLICY RECOMMENDATIONS

- Improvements to the accessibility of our healthcare system including:
 - More practicum placements in psychiatric nursing
 - Clinics that reduce barriers to access (longer hours, provide child care)
 - Clinicians and all staff trained in trauma-informed practices



KFPC POLICY RECOMMENDATIONS

- The implementation of community pantries and fridges in neighbourhoods across Kamloops.
- An increase in public-education aiming to destigmatize marginalised communities and teach citizens how to respond to a variety of mental and physical crises.



**WE'RE ONLY
AS SAFE AS
OUR
NEIGHBOUR**



“

We all have a role to play in helping our communities feel safer.



COMMUNITY FOOD SECURITY

Food and the City Series - Bonnie Kohn





ABOUT ISSUE

Our food supply chains are susceptible to disruption

Supply chains can adapt, but thinking about who is most affected by shortages is important

Climate change = increased frequency of supply chain issues



MORE ABOUT THE ISSUE

Community food security =
“all citizens obtain a safe, personally acceptable, nutritious diet through a sustainable food system that maximizes healthy choices, community self-reliance and equal access for everyone” (BC Interior Health Authority; Dietitians of Canada 2017).



MORE ABOUT THE ISSUE

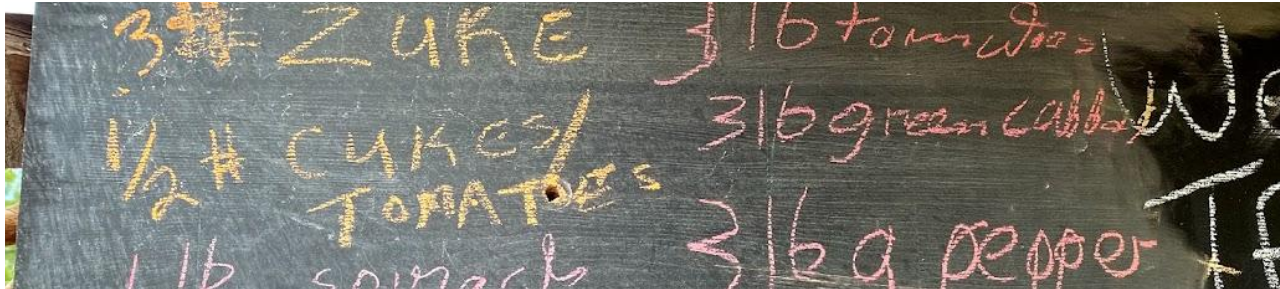
Food sovereignty=
Right of peoples to healthy and culturally appropriate food produced through ecologically sound and sustainable methods, and their right to define their own food and agriculture systems (La Via Campesina).



KFPC POLICY RECOMMENDATIONS

Mutual aid

- Create and implement a municipal Poverty Reduction Strategy that prioritizes food security for all as a human right
 - Establish decision making structures and equitable collaborative engagement to understand and act on the needs and concerns of people with lived/living experience of poverty.
 - Allocate municipal funds for a long term multi-year, multisectoral poverty reduction approach.
- Include community food security as a priority area in all emergency and disaster recovery planning processes



KFPC POLICY RECOMMENDATIONS

Locally Grown Food

- Initiate a 10-year evaluation and update of the City of Kamloops' Agriculture Area Plan (2023) and the Food and Urban Agriculture Plan (2025)
- Allocate municipal funding through service agreements to organizations responsible for implementing actions in the Food and Urban Agriculture Plan and Agriculture Area Plan



KFPC POLICY RECOMMENDATIONS

Local Food Processing and Distribution

- Continue to support facilities like the Stir, as well as other regional facilities such as abattoirs



KFPC POLICY RECOMMENDATIONS

Food Policies

- Allocate a portion of the City of Kamloops' investment in economic development specifically to grow the local food economy (Ensuring livelihoods that keep the food production sector in our region healthy and thriving)





DECOLONIZING THE MUNICIPALITY

Food and the City Series - Bonnie Klohn





WHAT DO WE MEAN BY DECOLONIZE?

DOCTRINE OF DISCOVERY

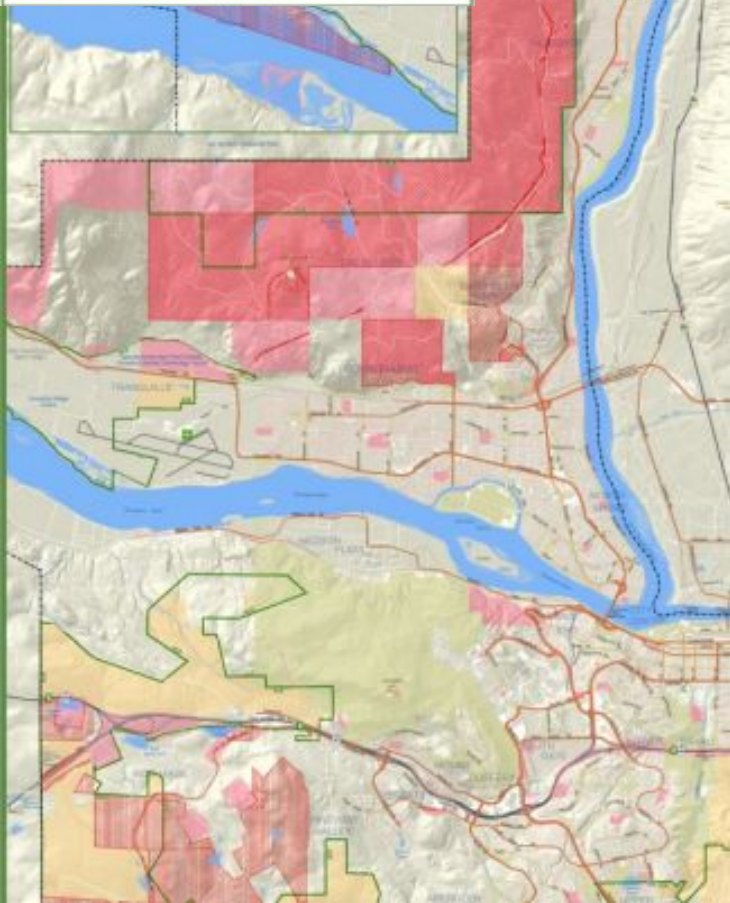
Assumption made by early colonists that there were no Indigenous laws

Led to the application of British Law

Resulted in Crown and private land and widespread alienation of Indigenous Land



Agriculture In Kamloops: Tenure and Crown Land Use



LAND ALIENATION

In BC:

Crown land = 94%

Indigenous reserve land = 0.4%.

In Canada:

Indigenous reserve land = 0.02%

LAND ALIENATION

Doctrine of Discovery

Colonists assumption about the absence of Indigenous law

Crown Land

Creation of crown land and private land holdings using British laws

Land alienation

Hindering Indigenous jurisdiction over land

Resource extraction

Widespread natural resource extraction benefitting settlers

Economic incentive

Requirement for continued land alienation for economic purposes

Poverty + crisis

Overlapping Indigenous crises



KAMLOOPS CONTEXT

Strong foundation for decolonial action

- Truth and Reconciliation Commission Action Plan
- Support for TteS additions to reserve, infrastructure and service agreements
- Local Truth and Reconciliation Webpage
- Previous alignment with Indigenous decisions (ex. AJAX Mine opposition)



KAMLOOPS CONTEXT



Council agreed to acknowledge Kamloops as unceded ancestral lands of TteS

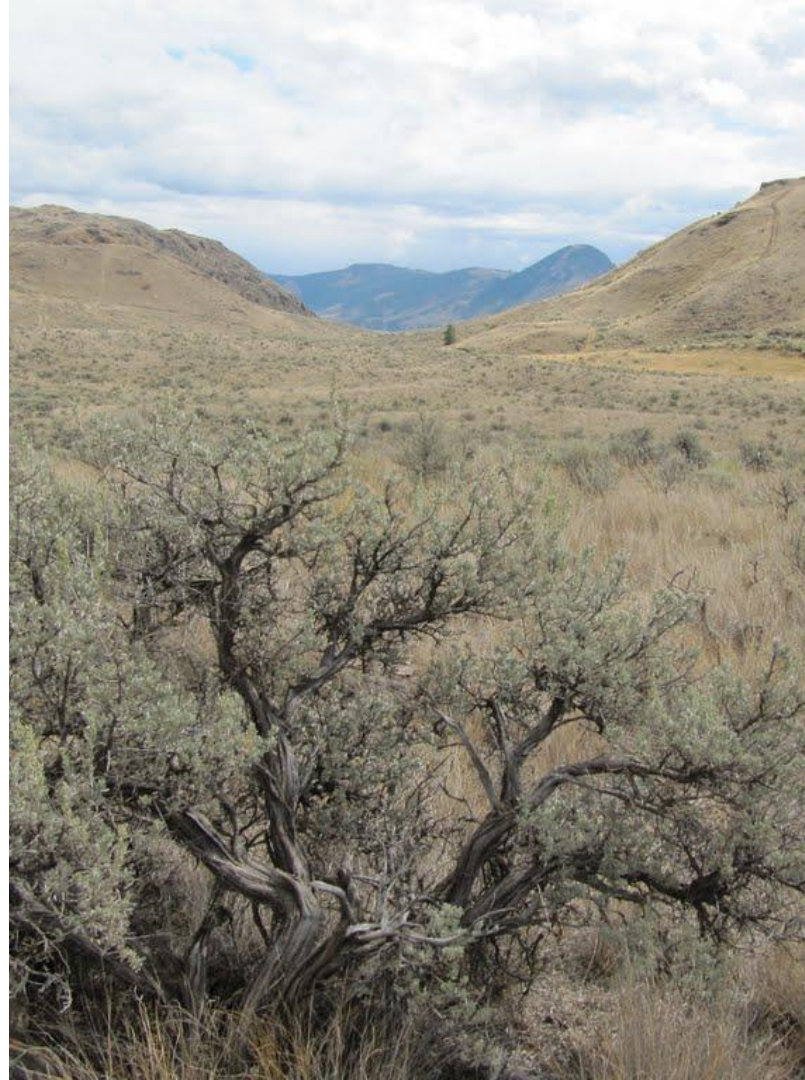


- City of Kamloops and Tk'emlúps te Secwépemc Truth and Reconciliation Commission Calls to Action Ongoing Action Plan



KAMLOOPS CONTEXT

What does it mean to truly acknowledge unceded ancestral land?



SOLUTION/POLICY RECOMMENDATIONS

- Formally recognize oral and written Indigenous law, and comply with Indigenous decisions, directives and resolutions when it comes to shared regional issues



SOLUTION/POLICY RECOMMENDATIONS

- Support Secwépemc-specific education, curriculum and citizen reflection and learning



SOLUTION/POLICY RECOMMENDATIONS

- Implement and promote municipal practices that acknowledge Indigenous land such as decolonization dialogues, a Secwepemc renaming program, and voluntary land taxes



“

It won't be fast, and it won't be simple, but it will be heartfelt, and it will be meaningful and it will be genuine

”

- Mayor Ken Christian

June 21st 2021 Mayor's report on Truth and Reconciliation

